



International
DATALYZER
Partners in Continuous Improvement

DataLyzer OEE Coach

Software for Overall Equipment Effectiveness



DataLyzer International

DataLyzer International provides its customers with advice, tools and support to promote manufacturing excellence through continuous improvement.

DataLyzer is the only supplier globally offering an integrated FMEA, MSA, SPC, OEE and CAPA solution.

DataLyzer OEE Coach

DataLyzer OEE coach has been developed by Arno Koch, based on more than 25 years' experience in the development and implementation of OEE software.

OEE Coach is revolutionary in a sense it coaches the user continuously:

- During data entry most logical buttons are highlighted in red, so the user immediately see what is required. For example if you start a production activity automatically the button is highlighted to select the product you are producing.
- Although the OEE calculation always adds up to 100% you can still make mistakes during data entry. For example, you can enter more products than you logically can produce in the entered production time, you could add activities which do not add up to 100% etc. DataLyzer OEE Coach will validate all data entered and make sure there are no inconsistencies in the data.
- During analysis, a broad range of powerful reports support the user with all the information required to establish a stable running process and set priorities for improvement. OEE Coach will also help you establishing what the financial impact of specific improvements will be.

Setup and configuration

During configuration of the OEE system you define units, teams, shifts, machines, products and activities.

DataLyzer OEE Coach supports all kind of different units of measurements and can translate during the data entry process to standardize. Whether you enter in pieces, volume or pounds the system can handle it all and convert automatically between units.

You can define shifts and teams and have the flexibility to make changes during data entry. Specific features like overtime, unscheduling of a machine can be handled on the fly.

During data entry shifts and teams are entered offering the possibility to reports across shifts or units for every period.

OEE is reported on machines but you can combine machines in machine groups, lines, departments, factories etc. Reports can again be shown per machine or section of machines.

Products can be entered or downloaded from your ERP system.

Activities can be freely defined. All activities are grouped according to the standard definition of Production, Failures, Waiting, Line constraint or Unscheduled.

In the machine – activity – Product setup screen all these configuration items come together. In this screen you enter your target plan-speed, the speed the machine is normally set to and its theoretical maximum speed as well as the number of operators required for each activity on that machine. Adding operators offers the possibility to calculate cost of production and support what-if analysis of improvement actions.

In this screen you also define material cost, extra handling cost and possible multipliers.

For example if you run different products at the same time on a production line OEE Coach can handle this out of the box.

Data entry

DataLyzer OEE Coach support 3 methods of data entry:

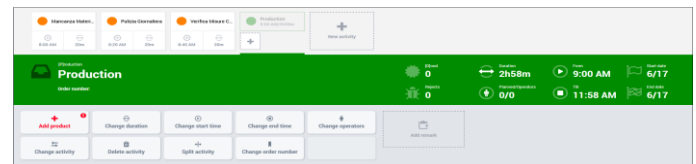
Manual
Semi automatic
Automatic

Manual:

OEE Coach supports the option to enter data retrospective, e.g. at the end of the shift. You can create a shift at any date and enter the activities, output and quality.

Semi automatic mode:

This is a Live Registration. In this mode the timing of activities is automatically. The user selects a new activity and the system will start the timer. The OEE status can be reported automatically and will advance during the shift.



Operator screen data entry

The system is designed to use a touch screen. Activities have standardized colours which are very clear and will be clearly visible on the shop floor.

The operator can always correct start or end times, duration and can insert activities since he may have been busy operating the machine first. At all times the system will automatically adjust times for adjacent activities in order to keep the sequence of registered time always correct.

Automatic mode

In automatic mode, whether the machine is running or not and the quantities of good products and defects are taken from a sensor or PLC. Downtimes are automatically started and stopped. In automatic mode the operator only needs to identify the real cause of the downtime. In cases where a machine runs un-manned, OEE Coach can provide an autonomous mode.



Analysis and reports

DataLyzr OEE Coach has a wealth of analysis options and reports. In order to fully support your improvement activities To accommodate the different perspectives of operators, operations managers and site management, OEE coach supports analysis based on OEE, OOE and TEEP. During production you need to analyse the data based on OEE, but if you need to discuss possible investments in machine capability you need to look at the data from a TEEP point of view.

For investment analysis you like to see product allocation- and financial consequences of different options. What would be more effective: implementing a night shift or investing in an extra machine? These kind of questions can be answered with OEE Coach.

OEE Coach uses Artificial Intelligence to determine whether used data is plausible to be correct or not. From the moment data is entered till it is being used to generate a chart, OEE Coach will give feedback when it discovers a (possible) flaw.

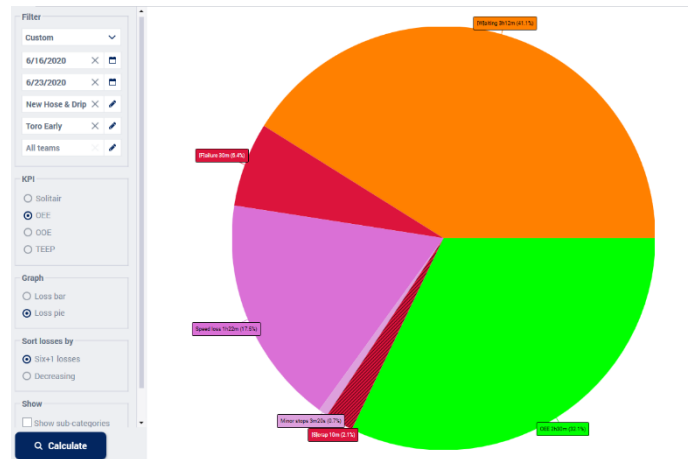
In all reports you can choose to validate data or not.

It will also give you options to present the data in a way it is best to understand for the user.

For example in the effectiveness report you see a breakdown in the 6 loss categories. The report can be shown in a bar chart or a pie loss. With 1 click you can show difference between OEE, OOE and TEEP giving you quick insight what could be gained with specific improvements.

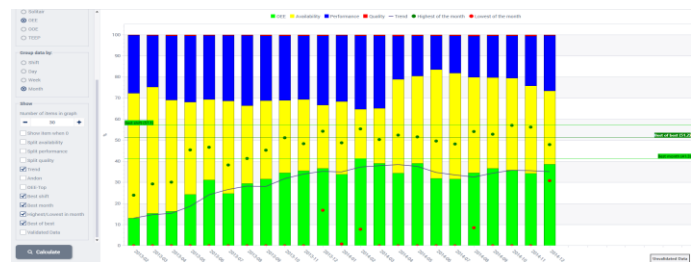


Bar chart OEE effectiveness



Pie chart OEE effectiveness

To get an insight how much improvement potential there is and to see whether the organization is improving, you would like to see the effectiveness in time. In the report you see all information needed to assess your production situation.



Machine effectiveness in time

OEE Coach provides a large number of other reports like shift reports, performance reports, quality reports, batch reports etc etc

Even specific reports like MTB reports are instantly available

MTB-P - Mean time between [P]roduction Scheduled Time - Total [P]roduction time = 135d18h10m = 1h1m53s10ms Total [P]roduction activities = 3159	MTO-P - Mean time of [P]roduction Total [P]roduction time = 177d11h11m = 1h20m53s770ms Total [P]roduction activities = 3159
MTB-W - Mean time between [W]aiting Scheduled Time - Total [W]aiting time = 246d12h13m = 1h30m12s88ms Total [W]aiting activities = 3936	MTO-W - Mean time of [W]aiting Total [W]aiting time = 66d16h8m = 24m23s577ms Total [W]aiting activities = 3936
MTB-F - Mean time between [F]ailures Scheduled Time - Total [F]ailure time = 272d12h30m = 2h29m23s Total [F]ailure activities = 2627	MTO-F - Mean time of [F]ailures Total [F]ailure time = 40d16h51m = 22m18s660ms Total [F]ailure activities = 2627
MTB-L - Mean time between [L]ine Restraints Scheduled Time - Total [L]ine restraint time = 291d20h6m = 10h16m11s789ms Total [L]ine Restraint activities = 682	MTO-L - Mean time of [L]ine restraints Total [L]ine restraint time = 219h15m = 45m9s238ms Total [L]ine Restraint activities = 682
MTB-U - Mean time between [U]nscheduled Scheduled Time - Total [U]nscheduled Time = 306d19h12m = 4d7h39m2s535ms Total [U]nscheduled activities = 71	MTO-U - Mean time of [U]nscheduled Total [U]nscheduled Time = 6d14h0m = 2h13m38d773ms Total [U]nscheduled activities = 71

Reports can be setup in a scheduler so you will receive all required reports automatically in your mail box at the required time.

User management and authorization

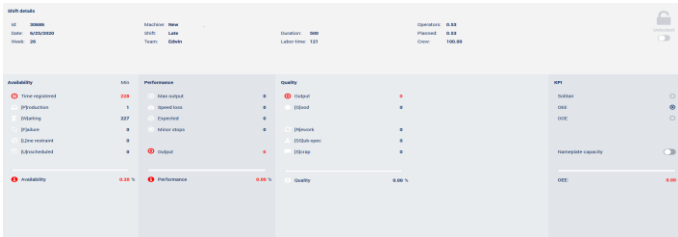
OEE coach offers the option to add roles and users. Based on the role the user can have access to specific machines and functionality of the software. This can even be tight to a specific PC.



OEE Coach strongly focusses on the empowerment and ownership of the shopfloor team and at the same time allowing line-and upper management to facilitate the teams based on accurate facts. The role- and rights structure facilitates optimal transparency of information, while protecting the data against unauthorized modifications. As with all features, OEE Coach facilitates the needs of real-life factory people.

Data validation

You may run a data validation on any cross section of the entered shift data in order to get an overview of all inconsistencies in the data. From the list you can jump instantly to any inconsistency and correct the problem.



Inconsistencies in a reported shift

Implementation support

DataLyzer has extensive experience in implementation of continuous improvement. DataLyzer people were the first to develop and implement SPC software, MSA software and OEE software. There is no company in the world having longer experience than DataLyzer.

Over the last 30+ years we have built an extensive network of specialists capable of supporting you with your continuous improvement efforts.

This offers DataLyzer customers access to more than 30 years' experience in all kind of industries in any country in your local language.

COMPANY HISTORY

DataLyzer International, Inc. was organized in the late 1970's to develop quality software for industry. Since that time, we have established a solid reputation for innovation and customer responsiveness.

DataLyzer International has contributed many firsts to its industry.

DataLyzer International was one of the first companies to provide a commercial (real-time) SPC software package for industry in the early 1980's. Soon after, we developed the first commercial Gage Repeatability and Reproducibility software package.

More recently, DataLyzer International was the first to offer multilingual SPC software products on multiple database platforms and FMEA, SPC and OEE are integrated.

OUR MISSION

DataLyzer International, Inc. is in business to develop software for continuous improvement of quality and productivity. Our progress depends on successfully pursuing the following principles:

- Listen and respond to customers with strong, maintenance-free products and features.
- Offer maximum value in personal service with each customer contact, whether it be sales, support, documentation, consultancy or customer training.
- Be alert for opportunities to improve.
- Support customers for the long run.



Customer Support

Technical support for the DataLyzer OEE Coach is available by phone, e-mail or by our automated support desk.

USA: Monday through Friday, 8:30 to 5:30 ET

Europe: Monday through Friday, 8:30 to 6:30 GMT -1

Asia: Monday through Friday IST 8:30 to 6:30

Support agreements are mandatory annually. Services include new versions upon request and personal telephone, fax or e-mail support.

Training seminars are available in our offices or on site. Contact your account manager for more information. Custom software modifications can be quoted individually.

Database Compatibility

DataLyzer OEE Coach is available on SQL Server. DataLyzer SPC Wizard and DataLyzer Spectrum software versions are available for use with Microsoft SQL Server databases (SQL Server Native Client, ODBC Driver), Oracle and Microsoft Access Databases.

Operating System Compatibility

DataLyzer OEE Coach works with the following Microsoft Windows operating systems: Windows 7, 8, 10.

Associated Modules

- DataLyzer Spectrum SPC
- DataLyzer SPC Wizard
- DataLyzer Certificate of Analysis
- DataLyzer Dashboard Module
- DataLyzer Qualis4.0 (Webbased SPC)
- DataLyzer Failure Mode and Effect Analysis

DataLyzer is a registered trademark of DataLyzer International Inc.

Citrix is a trademark of Citrix Systems, Inc. and/or one or more of its subsidiaries, and may be registered in the United States Patent and Trademark Office and in other countries. Oracle is a registered trademark of Oracle Corporation and/ or its affiliates. Microsoft, Excel, SQL Server, Windows NT, Windows are registered trademarks of Microsoft Corporation in the United States and other countries.

European office

DataLyzer® International bv
Eindhoven
The Netherlands
T +31-40-2940980
E sales@datalyzer.com

American office

DataLyzer® International, Inc.
Wixom, MI 48393
USA
T +1-248-960-3535
T 800-553-4SPC (4772) within the U.S.
F +1-248-946-8490
E sales@datalyzer.com

Asian office

DataLyzer® Technologies Pvt Ltd
Bangalore
India
T +91-9740013624
T +91-8026769337
E salesindia@datalyzer.com

www.datalyzer.com

International Distributors

DataLyzer® International has a very capable international distributor network. Most distributors have a long term relationship with our company and years of experience with the implementation of SPC, OEE, FMEA and DataLyzer® software.

For your local distributor look at
www.datalyzer.com/company/reseller/